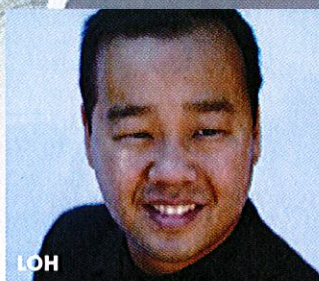




 **PITTSBURGH SYMPHONY ORCHESTRA**
COMMUNITY PARTNERS CONCERT WITH

BOYZ II MEN

JUNE 23, 2011 • 7:30 PM • HEINZ HALL



Join the Pittsburgh Symphony Orchestra and Resident Conductor Lawrence Loh for the eighth annual PSO Community Partners Concert. This year's performance features the sounds of Boyz II Men and the winner of the renowned 2011 Sphinx Competition, Paul Laraia. The PSO's Community Partners Concerts have raised more than \$539,000 for partnering nonprofit groups since they began in 2004.

2011 Participating Nonprofit Community Partners/Codes

Thank you to the following 25 nonprofit organizations who are participants in the 2011 Community Partners Program:

23845 Advisory Board on Autism and Related Disorders (ABOARD)

23846 African American Chamber of Commerce of Western PA

23847 Amachi Pittsburgh

23848 Cancer Carling Center

23849 Children's Sickle Cell Foundation, Inc.

23850 East End Cooperative Ministry (EECM)

23851 Focus On Renewal

23852 Greater Pittsburgh Community Food Bank

23853 Homeless Children's Education Fund

23854 Kuntu Repertory Theatre

23855 Martin Luther King, Jr. Reading & Cultural Center

23856 Mission Vision

23857 Naomi's Place Transitional Housing

23858 Pittsburgh Community Television

23859 PLEA

23860 Renaissance City Choirs

23861 Salvation Army

23862 Tickets for Kids Charities

23863 Transitional Services, Inc.

23864 Urban Impact Foundation

23865 Urban League of Greater Pittsburgh

23866 Ursuline Senior Services

23867 Ward Home, Inc.

23868 Western PA Humane Society

23869 YMCA of Greater Pittsburgh

TICKET PROCEEDS BENEFIT THE PARTICIPATING NONPROFIT PARTNER OF YOUR CHOICE
FOR TICKETS CALL 412.392.4900 • 800.743.8560 OR VISIT pittsburghsymphony.org

LEAD SPONSOR



Tickets prices range from \$25.75 to \$95.75

Please indicate your preferred community partner and their code when ordering your tickets.